

Burghfield

£34,950

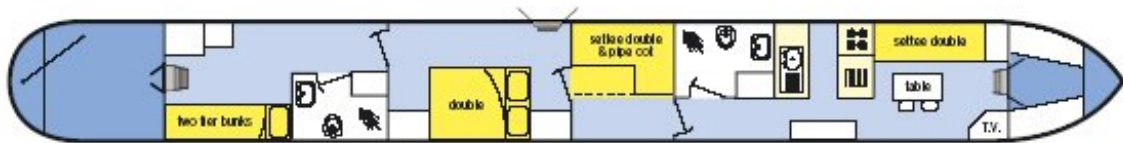
69ft cruiser



ABC LEISURE GROUP

Lying at Aldermaston Wharf

Telephone 01189 714123



Overall length	69ft	Beam	6ft 10ins
Draught	2ft 3ins	No. of Berths	8
Stern	Cruiser	Licensed	03/11
Boat Safety Cert.	Yes	Valid to	03/14
Shell Manufacturer	Alvechurch Boat Centres	Date	1988
Fitout	Alvechurch Boat Centres	Date	1988
Hull Material	Steel	Thickness	8/6mm
Cabin Material	Steel	Thickness	4/4mm
Engine	Barrus fitted 2008	Model	Shanks 40
Fuel	Diesel	Cooling	Indirect
Gearbox	Shanks	Model	tbc

Whilst every care has been taken in their preparation, the correctness of these details is not guaranteed. They are intended as a guide only and do not constitute a term of any contract. A prospective buyer is strongly advised to check the particulars and where appropriate to employ a qualified marine surveyor to inspect the vessel.

www.boatsales-uk.com

ABC Leisure Group Ltd Reg. Office: Scarfield Wharf, Alvechurch, Worcestershire B48 7SQ Reg. No. 2860394

Burghfield

£34,950

69ft cruiser



***** AVAILABLE AT THE END OF 2010 SEASON*****

A 1988 69ft Alvechurch Boat Centres 8 berth cruiser stern ex hire fleet narrowboat

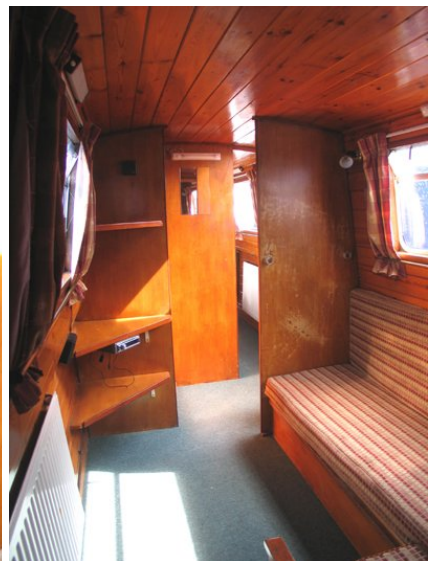
Interior: Forward dinette double with TV unit, storage and radiator. Galley with Vanette cooker, Shoreline refrigerator, sink, worktops and storage. Bathroom with hip bath and shower over, basin and Mansfield toilet. Central settee/double berth with storage. Fixed double berth and storage. Shower room with basin, toilet and storage. Rear single bunks and storage. **Fit out:** floor – carpet, hull & cabin sides and deckhead in tongue & groove pine, bulkheads – ash faced ply, fittings – brass.

Maintenance History: Engine new in 2008 (2500 hours), regularly serviced, last service in March 2010. Hull blacked in 2007. 4 x 4kg anodes fitted in 2000.

Heating: LPG Alde 2810 central heating. Hot water – Albion 67 litre horizontal calorifier. Twin coil (Alde/Engine)

Electrical Systems: 12volt, split charging, 1 starter and 2 domestic batteries. Shoreline.

Capacities: Fuel – 300 litres. Water – 600 litres. Propane gas cylinders 2 x 13kg. Toilet(2) holding tank – 45 gallons.



Whilst every care has been taken in their preparation, the correctness of these details is not guaranteed. They are intended as a guide only and do not constitute a term of any contract. A prospective buyer is strongly advised to check the particulars and where appropriate to employ a qualified marine surveyor to inspect the vessel.

www.boatsales-uk.com

ABC Leisure Group Ltd Reg. Office: Scarfield Wharf, Alvechurch, Worcestershire B48 7SQ Reg. No. 2860394